

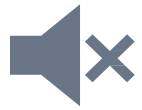
Peer Support Services

Adding Mental Health Peer Support Services to the Ohio
Medicaid Behavioral Health Benefit.



This presentation includes proposed policies that are subject to change by ODM.

Webinar Instructions



All participants can mute and unmute their own lines, **so please be sure to mute your line when you're not talking. If you are muted during the meeting and called in, you must press *6 to unmute.**



We hope to have robust oral discussion among attendees. Attendees may also enter comments or questions using the **chat** feature in Teams.



The slides from this meeting will be available following the meeting on the BH Policy Page

Access, Inclusion, and Reasonable Accommodation

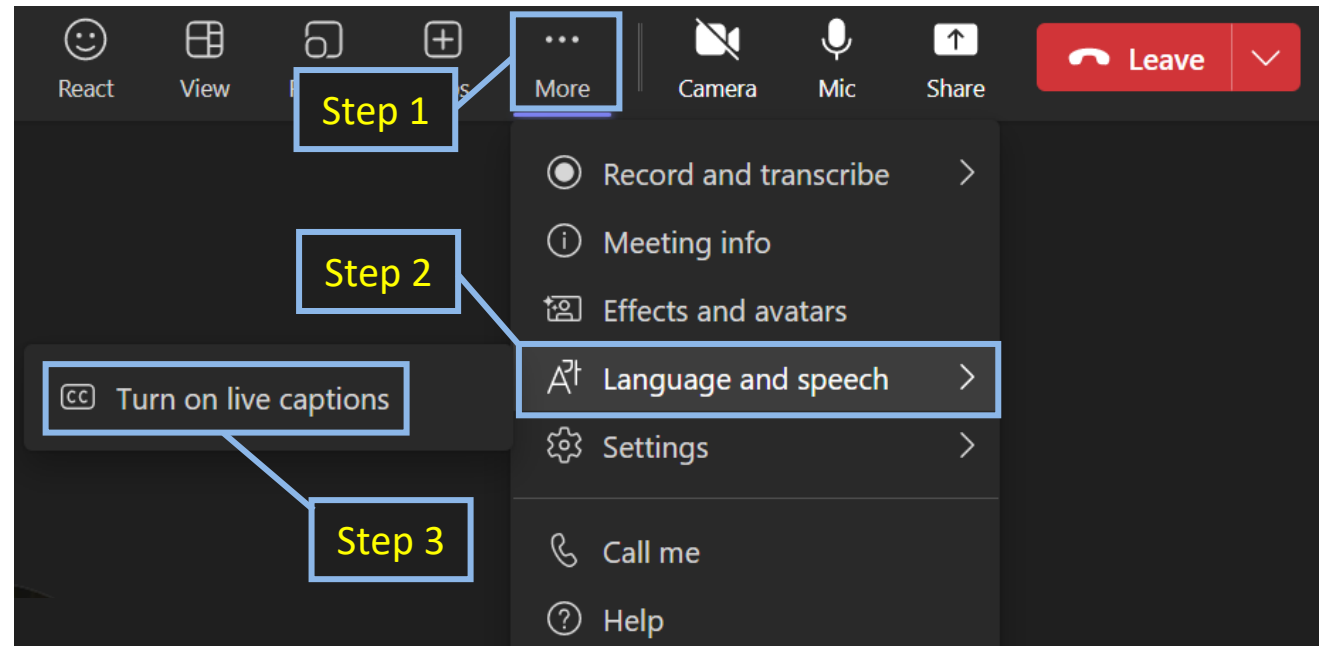
Ohio Department of Medicaid is committed to providing access, inclusion, and reasonable accommodation in its services, activities, programs, and employment opportunities in accordance with the Americans with Disabilities Act (ADA), Title VI of the Civil Rights Act, and other applicable laws. To request an interpreter, written information in a language other than English or in other formats (large print, audio, accessible electronic formats, other formats), or a reasonable accommodation due to a disability, please contact ODM's Civil Rights/ADA Coordinator at 614-995-9981/TTY 711, fax 1-614-644-1434, or ODM_EEO_EmployeeRelations@medicaid.ohio.gov. Requests should be made prior to the scheduled event.

If you believe ODM has failed to provide these services or discriminated in another way, you can file a grievance with ODM's civil rights coordinator and/or file a civil rights complaint with the U.S. Department of Health and Human Services (HHS) Office for Civil Rights. Further information on these processes and ODM's compliance with civil rights and other applicable laws can be found in their Notice of Nondiscrimination.

Unless ODM's Civil Rights/ADA Coordinator approves in advance, individuals may not record the meeting using the recording function in Microsoft Teams, GoToMeeting, Zoom, etc. or utilize artificial intelligence (AI) technologies to transcribe meetings.

Housekeeping

- For today's presentation, **participants can utilize the closed captioning functionality in Teams by following the steps below. If you need assistance, please use the chat feature to indicate assistance is needed**
 - **Step 1:** Click the ellipsis
 - **Step 2:** Click "Language and speech"
 - **Step 3:** Select "Turn on live captions"



Today's Agenda

1. **Peer Support Services Overview** ---Ohio Department of Mental Health and Addiction Services
2. **Expanded Medicaid Coverage Mental Health Peer Support** --- Ohio Department of Medicaid
3. **Questions**

Peer Support Services Overview

Peer support services

5122-29-15

Ongoing exploration of recovery, resiliency, and wellness needs;

Supporting individuals and their caregivers and families in achieving goals through increased knowledge, skills and connection as identified by the individual or family;

Encouraging hope;

Supporting the development of life skills;

Developing and working toward achievement of individualized recovery, resiliency, and wellness goals;

Modeling personal responsibility for resiliency, recovery and wellness;

Teaching and coaching skills to effectively navigate systems to effectively and efficiently utilize services;

Addressing skills or behaviors, through processes that assist an individual, caregiver, or family in eliminating barriers to achieving or maintaining recovery, resiliency, and wellness;

Assisting with accessing and developing natural support systems;

Promoting coordination and linkage among providers;

Coordinating or assisting in crisis interventions and stabilization;

Conducting outreach and community education;

Attending and participating in team decision making or specific treatment team; or,

Assisting individuals, caregivers, or families in the development of empowerment skills through advocacy and activities that mitigate discrimination and inspire hope.

Peer Support Certification

- **Peer Supporters must be Certified** pursuant to the rule (5122-29-15.1)
 - Complete Approved Training/Course -or -
 - Have 3-years Verifiable Experience
- Must pass the applicable peer support exam
- Must be able to pass a background check



Adult Peer Recovery Supporter

direct lived experience, self-identified as being in recovery from a mental health or substance use disorder

2,814 certified



Youth Peer Supporter

lived experience with the behavioral health care system and other child or youth serving systems

29 certified



Family Peer Supporter

caregiver of a person with behavioral health challenges

144 certified

Peer Supporter Certification Renewal & Continuing Education

Peer Supporter certification is active for a period of two years.

Renewal requirements: complete 30 hours of continuing education.

14 hours of general, and 16 hours of specific topics:

- Ethics (may include HIPAA, confidentiality) - 3 hours
- Boundaries- 3 hours
- Diversity and inclusion/cultural sensitivity - 2 hours
- System Navigation and care coordination -1 hour
- Trauma Informed Care - 2 hours
- Human Trafficking - 1 hour
- Behavioral health knowledge (may include recovery and resiliency) -1 hour
- Basic principles related to health and wellness - 1 hour
- Principles of coaching as applied to delivery of peer services- 2 hours

Peer Supporter Supervision

Certified Peer Supporters are to be **Supervised by** an Individual who is either:

- A Peer Supporter with workforce experience cumulative of two years.
 - --OR--
 - A clinician with one of the following credentials: LSW, LISW, LPC, LPCC, LCDCCII, LCDCCIII, LICDC, LMFT, Psychologist, Psychiatrist
-
- All supervisors are required to take 16 hours of ebased Academy coursework and complete the designated 4-hour Peer Supporter Supervision training.

OHIO PEER SUPPORTER CODE OF ETHICS

- Adhere to privacy and confidentiality of those they serve
- Respect the rights and dignity of those they work with
- Openly share their personal recovery and resiliency stories with colleagues and those they serve
- Role-model recovery and resiliency
- Not enter dual relationships or commitments that conflict with the interests of those they serve
- Not engage in sexual or intimate activities with colleagues or those they serve
- Not accept or give gifts of significant value from those they serve
- Comply with laws and regulations involving mandating reporting of harm, abuse or neglect
- Conduct themselves in a professional manner, including:
 - Never intimidating, threatening or harassing those they serve
 - Never make unwarranted promises of benefits to those they serve
 - Maintaining high standards of personal conduct

HOW DO PEERS INTERACT WITH OTHER ROLES?

- The shared lived experience drives every interaction.
- Compliments and collaborates with other roles, such as CDCA, Case Manager, Therapist
- Peers should not take the place of case managers, CDCA or other clinical staff

Expanded Medicaid Coverage Mental Health Peer Support

Project Status

★ **CURRENT PHASE**



- ✓ Legislative Approval –HB 33
Ohio's 2024-2025 Budget



- ✓ Planning and Policy
Development

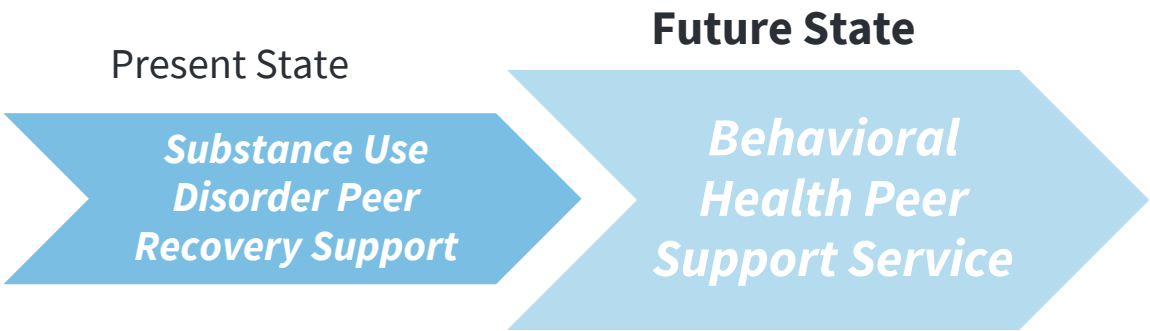


- ✓ Policy Implementation and
Operations



Ongoing Communication and Collaboration with
Individuals We Serve and Our Partners

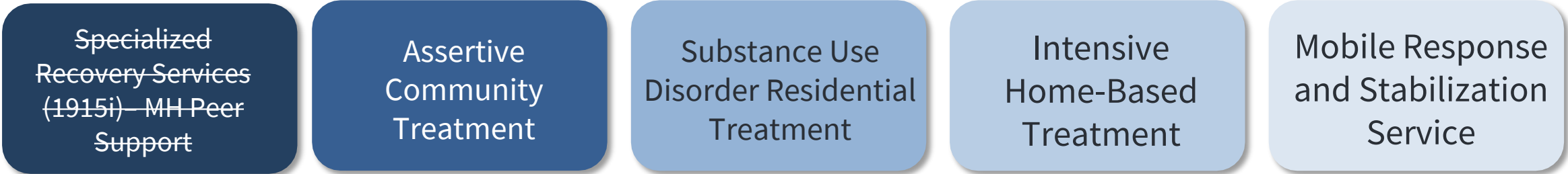
Medicaid Peer Support Services



- » Behavioral Health Peer Support Services -- Individual and Group → H0038 (no change to code or billing methodology)
- » Behavioral Health includes Mental Health and Substance Use Disorders.



Peer Support Services Continue to be Available as a Component of the Following:



Mental Health Peer Support is being transitioned from SRSP to State Plan

Certified Peer Supporters in Ohio

Peer Certification/Training Type	Individuals Certified
Certified Peer Recovery Supporter	2,814
Certified Family Peer Supporter	144
Certified Youth Peer Supporter	29

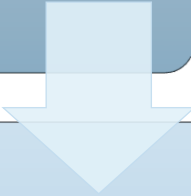
as of 03/11/2024

Enrolled as Medicaid Providers:


#1,345 (03/14/2024)

Peer Supporter Medicaid Provider Enrollment Requirements

Billing Provider (employing/contracting agency) must be certified by OhioMHAS for service(s) and enrolled as a Medicaid community behavioral health provider.



Peer Supporter must be individually certified by OhioMHAS.



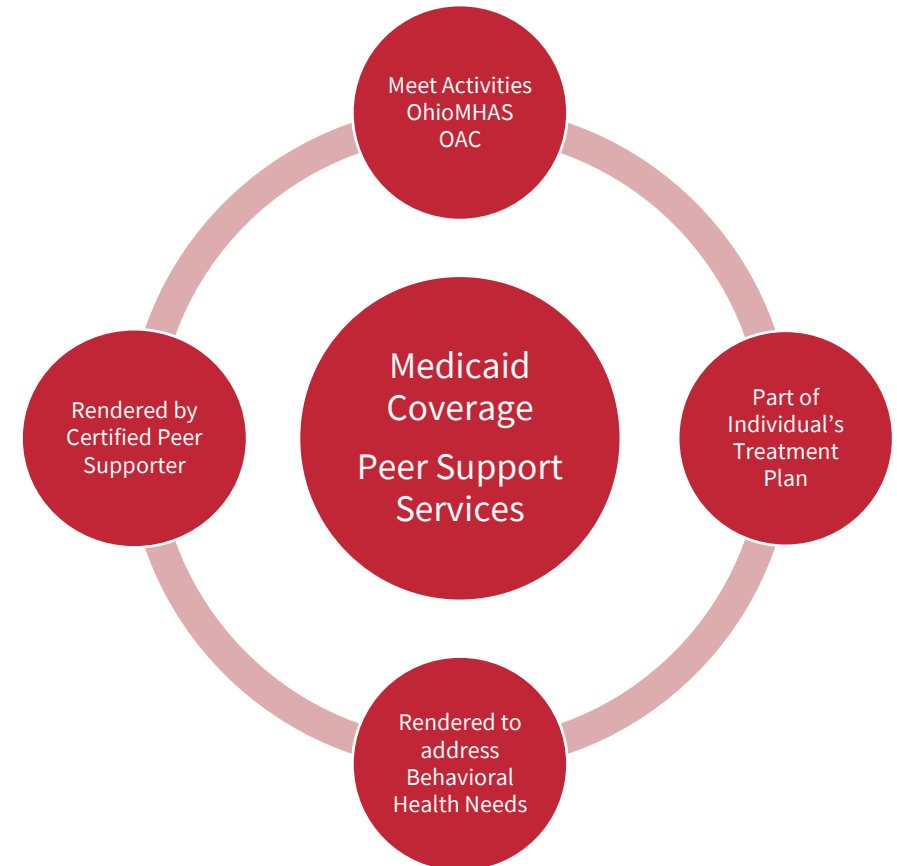
Peer Supporter gets an NPI and Enrolls with Ohio Medicaid.

**Must be affiliated with certified and Medicaid enrolled 84 or 95 (community BH agency)*

Coverage Criteria

To be reimbursable, must:

- Meet activities/definition of peer support services in OhioMHAS 5122-29-15
- Be rendered by a peer supporter, certified in accordance with 5122-29-15.1
- Meet Medical Necessity requirements for services:
 - Peer support services need to be **included in the individual's treatment plan.**
 - Rendered to address the individual's behavioral health condition(s) [[Group A: Mental Health and Substance Use Disorders](#)]



Billing for Peer Support Services –

Community-based Behavioral Health Peer Support Services

Code --- H0038

Individual Peer Support Service

Group Peer Support Service
(+ HQ Modifier)

----- **Unit Rate (15 minute)**

*Remove “**SUD**” and “**Recovery**” from **Peer Support Service** Description in Ohio Administrative Code (OAC), Medicaid BH Manual, and Rule Appendix.*

Behavioral Manual Updates

DRAFT -Table 4-2: Peer Support

MH/SUD						
Service	Provider Type	Code	Practitioner Modifier	Procedure Modifier	Rate through December 31, 2023	Rate effective January 1, 2024
Individual Peer Support Service	PSS	H0038	HM, HN, HO	-	\$15.51	\$17.49
Group Peer Support Service	PSS	H0038	HM, HN, HO	HQ	\$1.94	\$2.19
Unit Value	15 minutes					
Permitted POS	03, 04, 11, 12, 13, 14, 16, 18, 23, 31, 32, 33, 34, 53, 57, 99		Telehealth allowed with GT modifier. GT modifier is required when service rendered via telehealth.			

Family Peer Support

- Peer Support Services may be delivered to the Parent/Legal Guardian of an Individual with Medicaid Coverage, when:
 - Delivered for the benefit of the individual with Medicaid coverage, and
 - For the purposes of accomplishing goals or objectives identified in the individualized treatment plan.

Additional Requirements

- Prior authorization will only be required when services exceed 4-hours per day per client.
- Group Peer Support 1:12 peer to client ratio
- Billing/payment for other covered Medicaid services is not allowable for the provision of the peer support services.
 - Examples, Community psychiatric supportive treatment (CPST), Therapeutic behavioral services (TBS), psychosocial rehabilitation (PSR), SUD Case Management
- Not Separately Reimbursable when an Individual is:
 - Enrolled in Intensive Home-Based Treatment (IHBT)
 - Enrolled in Assertive Community Treatment (ACT)
 - Receiving SUD Residential (except for the purposes of admit and discharge planning)
 - Receiving care in an Inpatient Psychiatric Facility (except for transitions of care – admission and discharge)
 - Receiving care in a Psychiatric Residential Treatment Facility (PRTF) (except for transitions of care – admission and discharge)
 - Mobile Response and Stabilization Services (MRSS) (except for transition from MRSS to regular source of care)

Next Steps

★ CURRENT PHASE



- ✓ File Administrative Code Rule (after Clearance)
- ✓ Submit State Plan Amendment for Federal Approval
- ✓ Complete System Updates (fee for service and managed care)
- ✓ Update Billing Instructions



Collaboratively with OhioMHAS, continue to Support Peer Supporters and Provider agencies:

- Training
- Technical Assistance
- Implementation Needs



Ongoing Communication and Collaboration With
Individuals We Serve And Our Partners

Questions

Additional Resources

[Information on Peer Support –OhioMHAS](#)

Contact Information –Peer Support Questions:

- For certification questions: ohiopeercertification@mha.ohio.gov
- Peer Support general mailbox: peerservices@mha.ohio.gov
- For Youth or Family Peer Support: youthandfamilypeersupport@mha.ohio.gov

Rule Tracking Resources:

- [Rules being reviewed by CSIO](#)
- [Rules to be reviewed by JCARR](#)